

# INDUSTRIAL SHOCK ABSORBERS POWERSTOP

## THREAD M36X1.5

### ► SERIES

PowerStop®



- |  |                     |                                  |                        |
|--|---------------------|----------------------------------|------------------------|
| ► Standard Energy pressure max. (abs.)   | 1 [bar]             | ► Locknut tightening torque max. | 80 [Nm]                |
| ► High Energy pressure max. (abs.)       | 10 [bar]            | ► Force in end position max.     | 30 [kN]                |
| ► Adjustable Energy pressure max. (abs.) | 10 [bar]            | ► Material                       | Stainless steel        |
| ► Angle of Impact max.                   | 2 [°]               | ► Material fixed stop            | Aluminum nickel plated |
| ► Max. piston return time                | N: 0.5 / L: 0.8 [s] | ► PWIS-free                      | Yes                    |
| ► Permitted temperature range            | -10 ... +70 [°C]    | ► RoHS compliant                 | Yes                    |
| ► Organic oil (biodegradable)            | H1-certified        | ► REACH compliant                | Yes                    |

### ► TECHNICAL DATA

	Design	Series	Thread	Stroke variant	Stroke [mm]	Hardness degree	Impact velocity			Energy absorption max.			Protection	Return force		Head	Version
							Impact velocity		Continuous operation		Emergency stop operation	min.		max.			
							min.	max.	per stroke	per hour	per stroke				[N]		
					[m/s]	[J]	[J/h]	[J]									
STANDARD ENERGY	P	SE	36X15	N	30	H	0,1	1,2	185	140.000	185	D	15	35	D	-A	
						M	0,8	2,2	185	140.000	185	A	15	35	S		
						S	1,8	3,5	185	140.000	185	F	15	35	K		
						W	3	5	185	140.000	185						
HIGH ENERGY	P	HE	36X15	N	30	H	0,1	1,2	400	140.000	800	D	40	65	D	-A	
						M	0,8	2,2	360	140.000	650	A	40	65	S		
				L	50	S	1,8	3,5	320	140.000	500	F	40	65	K		
						W	3	5	280	140.000	350						
ADJUSTABLE ENERGY	P	AE	36X15	N	30	H	0,1	5	400	140.000	400	D	40	65	D	-A	
												A	40	65	S		
				L	50							F	40	65	K		

### ► HOW TO ORDER CORRECTLY

P HE 36X15 L H A K -A



#### Product finder

- Calculate shock absorbers quicker
- Clearly arranged selection guide
- Smart solution – available on mobile devices

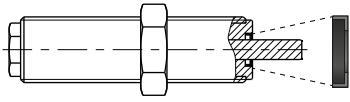
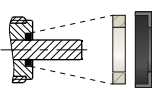
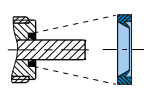
[www.zimmer-group.de/en/pdti](http://www.zimmer-group.de/en/pdti)

#### Example order no.

PowerStop High Energy 36X15

- Stroke variant: long (L)
- Hardness degree: Hard (H)
- Protection: wiper (A)
- Head: plastic head (K)

## PROTECTION

no protection	Felt ring	Wiper (NBR)
D -A	F -A	A -A
		
in a clean environment	against dust, chips, ...	against liquid, oil, ...

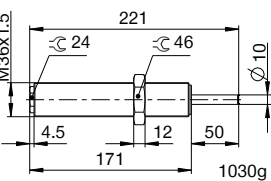
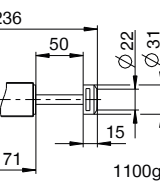
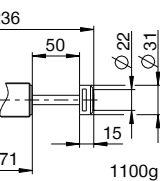
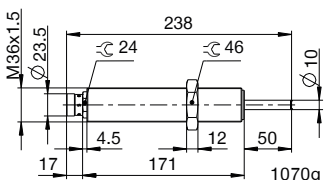
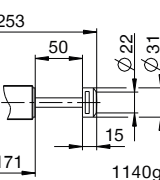
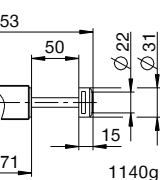
## TECHNICAL DRAWINGS – STANDARD STROKE

N  -A

	no head	with steel head	with plastic head
	D -A	S -A	K -A
STANDARD ENERGY			
HIGH ENERGY			
ADJUSTABLE ENERGY			

## TECHNICAL DRAWINGS – LONG STROKE

L  -A

	no head	with steel head	with plastic head
	D -A	S -A	K -A
HIGH ENERGY			
ADJUSTABLE ENERGY			



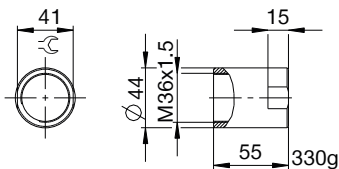
# INDUSTRIAL SHOCK ABSORBERS POWERSTOP

## THREAD M36X1.5

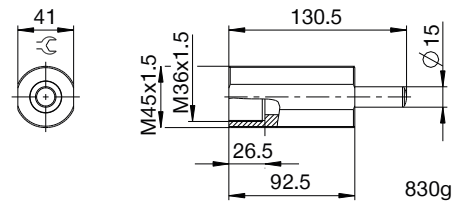
### ACCESSORIES

Pos.	Order no.	Accessories	Remarks
①	<b>PAH36X15-A</b>	Stop sleeve	Including 1x PVM36X15-A
②	<b>PBV36X15NA-A</b>	Side load adapter standard stroke Protection: wiper (NBR)	Impact angle max. 30°. Can only be used in combination with industrial shock absorbers without head. Locknut PVM45X15-A suitable for external thread of the side load adapter.
③	<b>PBV36X15NF-A</b>	Side load adapter standard stroke Protection: felt ring (felt)	Impact angle max. 30°. Can only be used in combination with industrial shock absorbers without head. Locknut PVM45X15-A suitable for external thread of the side load adapter.
④	<b>PBV36X15LA-A</b>	Side load adapter long stroke Protection: wiper (NBR)	Impact angle max. 30°. Can only be used in combination with industrial shock absorbers without head. Locknut PVM45X15-A suitable for external thread of the side load adapter.
⑤	<b>PBV36X15LF-A</b>	Side load adapter long stroke Protection: felt ring (felt)	Impact angle max. 30°. Can only be used in combination with industrial shock absorbers without head. Locknut PVM45X15-A suitable for external thread of the side load adapter.
⑥	<b>PKS36X15-A</b>	Clamping flange orthogonal screwed	On request.
⑦	<b>PKP36X15-A</b>	Clamping flange screwed in parallel	On request.
⑧	<b>PVM36X15-A</b>	Stainless steel locknut	Included with the industrial shock absorber.
⑨	<b>PDD36X15-A</b>	Pressure chamber seal	On request.

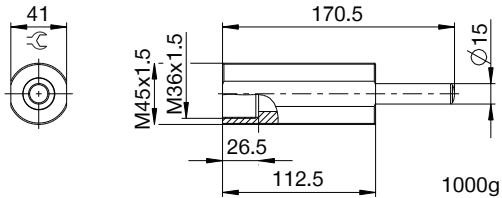
①



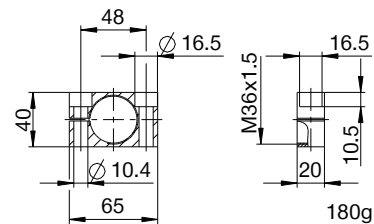
② ③



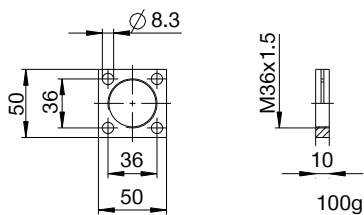
④ ⑤



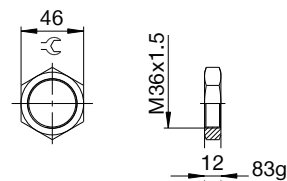
⑥



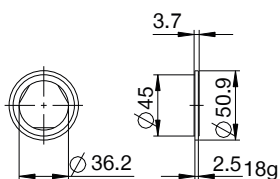
⑦



⑧



⑨



## ▶ CLASSIFICATION

**P** **HE** **36X15** **L** **H** **A** **K** **-A**

### Design

**P** Industrial shock absorbers PowerStop

### Series

**ME** Mini Energy

**SE** Standard Energy

**HE** High Energy

**AE** Adjustable Energy

### Thread

**36** Thread nominal diameter

**X**

**15** Thread pitch (factor 10)

### Stroke variant

**N** Standard stroke

**L** Long stroke

**V** Extra long stroke

### Hardness degree

**H** Hard (0.1 - 1.2 m/s; Adjustable Energy: 0.1 - 5 m/s)

**M** Medium (0.8 - 2.2 m/s)

**S** Soft (1.8 - 3.5 m/s)

**W** Supersoft (3 - 5 m/s)

### Protection

**D** no protection

**F** Felt ring

**A** Wiper (NBR)

**B** Bellow (TPE)

### Head

**D** no head

**S** with steel head

**K** with plastic head

### Version

**-A** Versioning from a to z