

INDUSTRIAL SHOCK ABSORBERS POWERSTOP

THREAD M22X1.5

► SERIES

PowerStop



- | | | | |
|---|---------------------|---|------------------------|
| ► Standard Energy pressure max. (abs.) | 1 [bar] | ► Locknut tightening torque max. | 40 [Nm] |
| ► High Energy pressure max. (abs.) | 10 [bar] | ► Force in end position max. | 10 [kN] |
| ► Adjustable Energy pressure max. (abs.) | 10 [bar] | ► Material | Stainless steel |
| ► Angle of Impact max. | 2 [°] | ► Material fixed stop | Aluminum nickel plated |
| ► Max. piston return time | N: 0.3 / L: 0.5 [s] | ► PWIS-free | Yes |
| ► Permitted temperature range | -10 ... +70 [°C] | ► RoHS compliant | Yes |
| ► Organic oil (biodegradable) | H1-certified | ► REACH compliant | Yes |

► TECHNICAL DATA

	Design	Series	Thread	Stroke variant	Stroke [mm]	Hardness degree	Impact velocity			Energy absorption max.			Protection	Return force		Head	Version
							Impact velocity		Continuous operation		Emergency stop operation	min.		max.			
							min.	max.	per stroke	per hour	per stroke				[N]		
					[m/s]	[J]	[J/h]	[J]									
STANDARD ENERGY	P	SE	22X15	N	15	H	0,1	1,2	41	90.000	41	D	7	15	D	-A	
							M	0,8	2,2	41	90.000	41	A	7	15		S
							S	1,8	3,5	41	90.000	41	F	7	15		K
							W	3	5	41	90.000	41					
HIGH ENERGY	P	HE	22X15	N	15	H	0,1	1,2	80	90.000	150	D	16	26	D	-A	
							M	0,8	2,2	75	90.000	125	A	16	26		S
				L	25	H	S	1,8	3,5	70	90.000	100					
							W	3	5	65	90.000	75	F	16	26		K
ADJUSTABLE ENERGY	P	AE	22X15	N	15	H	0,1	5	80	90.000	80	D	16	26	D	-A	
												A	16	26	S		
				L	25							F	16	26	K		

► HOW TO ORDER CORRECTLY

P HE 22X15 L H A K -A



Product finder

- Calculate shock absorbers quicker
- Clearly arranged selection guide
- Smart solution – available on mobile devices

www.zimmer-group.de/en/pdti

Example order no.

PowerStop High Energy 22X15

- Stroke variant: long (L)
- Hardness degree: Hard (H)
- Protection: wiper (A)
- Head: plastic head (K)

PROTECTION

no protection	Felt ring	Wiper (NBR)
D -A	F -A	A -A
in a clean environment	against dust, chips, ...	against liquid, oil, ...

TECHNICAL DRAWINGS – STANDARD STROKE

N -A

	no head	with steel head	with plastic head
	D -A	S -A	K -A
STANDARD ENERGY			
HIGH ENERGY			
ADJUSTABLE ENERGY			

TECHNICAL DRAWINGS – LONG STROKE

L -A

	no head	with steel head	with plastic head
	D -A	S -A	K -A
HIGH ENERGY			
ADJUSTABLE ENERGY			



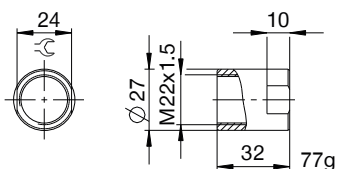
INDUSTRIAL SHOCK ABSORBERS POWERSTOP

THREAD M22X1.5

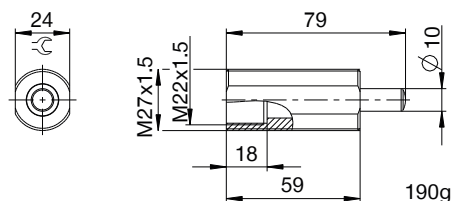
▶ ACCESSORIES

Pos.	Order no.	Accessories	Remarks
①	PAH22X15-A	Stop sleeve	Including 1x PVM22X15-A
②	PBV22X15NA-A	Side load adapter standard stroke Protection: wiper (NBR)	Impact angle max. 30°. Can only be used in combination with industrial shock absorbers without head. Locknut PVM27X15-A suitable for external thread of the side load adapter.
③	PBV22X15NF-A	Side load adapter standard stroke Protection: felt ring (felt)	Impact angle max. 30°. Can only be used in combination with industrial shock absorbers without head. Locknut PVM27X15-A suitable for external thread of the side load adapter.
④	PBV22X15LA-A	Side load adapter long stroke Protection: wiper (NBR)	Impact angle max. 30°. Can only be used in combination with industrial shock absorbers without head. Locknut PVM27X15-A suitable for external thread of the side load adapter.
⑤	PBV22X15LF-A	Side load adapter long stroke Protection: felt ring (felt)	Impact angle max. 30°. Can only be used in combination with industrial shock absorbers without head. Locknut PVM27X15-A suitable for external thread of the side load adapter.
⑥	PKS22X15-A	Clamping flange orthogonal screwed	On request.
⑦	PKP22X15-A	Clamping flange screwed in parallel	On request.
⑧	PVM22X15-A	Stainless steel locknut	Included with the industrial shock absorber.
⑨	PDD22X15-A	Pressure chamber seal	On request.

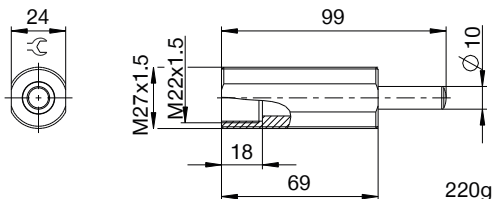
①



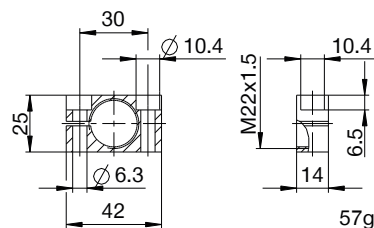
② ③



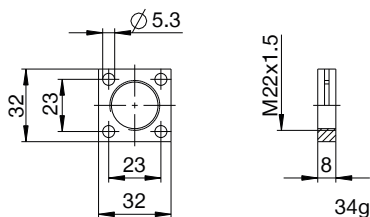
④ ⑤



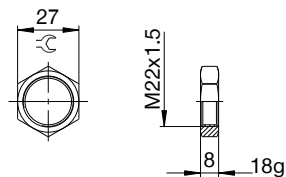
⑥



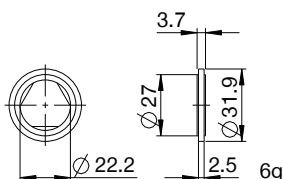
⑦



⑧



⑨



▶ CLASSIFICATION

P **HE** **22X15** **L** **H** **A** **K** **-A**

Design

P Industrial shock absorbers PowerStop

Series

ME Mini Energy

SE Standard Energy

HE High Energy

AE Adjustable Energy

Thread

22 Thread nominal diameter

X

15 Thread pitch (factor 10)

Stroke variant

N Standard stroke

L Long stroke

V Extra long stroke

Hardness degree

H Hard (0.1 - 1.2 m/s; Adjustable Energy: 0.1 - 5 m/s)

M Medium (0.8 - 2.2 m/s)

S Soft (1.8 - 3.5 m/s)

W Supersoft (3 - 5 m/s)

Protection

D no protection

F Felt ring

A Wiper (NBR)

B Bellow (TPE)

Head

D no head

S with steel head

K with plastic head

Version

-A Versioning from a to z