

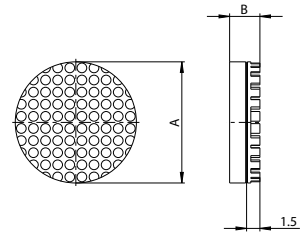
# VALVES, FITTINGS, ACCESSORIES

## JAW ACCESSORIES

### ► SERIES DG - RUBBER JAW PADS



- Available in different versions
- A packaging unit includes 6 pcs.



#### Order no.

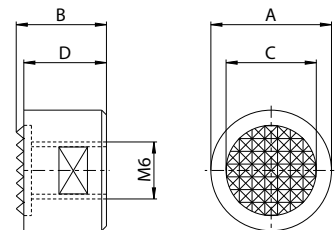
|          | DG6 | DG6SI    | DG10 | DG10SI   | DG16 | DG16SI   | DG20 | DG20SI   |
|----------|-----|----------|------|----------|------|----------|------|----------|
| A [mm]   | 6   | 6        | 10   | 10       | 16   | 16       | 20   | 20       |
| B [mm]   | 5   | 5        | 5    | 5        | 5    | 5        | 5    | 5        |
| Material | NBR | Silicone | NBR  | Silicone | NBR  | Silicone | NBR  | Silicone |

#### ► Technical Data

### ► SERIES GR - HARD JAW INSERTS



- Available in different versions



#### Order no.

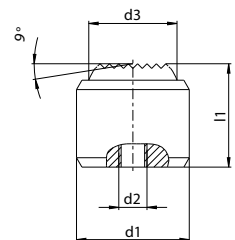
|        | GR4  | GR4A | GR4C | GR5  | GR6  |
|--------|------|------|------|------|------|
| A [mm] | 12.7 | 12.7 | 12.7 | 15.8 | 19   |
| B [mm] | 9.5  | 12.7 | 16.5 | 9.5  | 9.5  |
| C [mm] | 9.5  | 9.5  | 9.5  | 12.7 | 15.8 |
| D [mm] | 8.7  | 11.9 | 15.8 | 8.7  | 8.7  |

#### ► Technical Data

### ► SERIES J - HARD JAW INSERTS, FLOATING



- Available in different versions



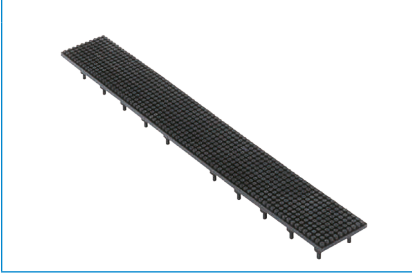
#### Order no.

|            | J712 | J718 | J728 |
|------------|------|------|------|
| Ø- d1      | 12n6 | 18n6 | 28n6 |
| Ø- d2 [mm] | M3   | M4   | M5   |
| Ø- d3 [mm] | 7    | 10   | 20   |
| L1 [mm]    | 10   | 16   | 25   |

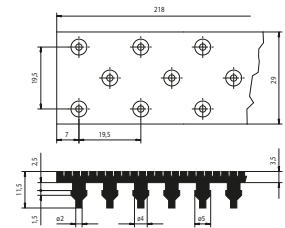
#### ► Technical Data



## ► SERIES GU - RUBBER JAW LINERS



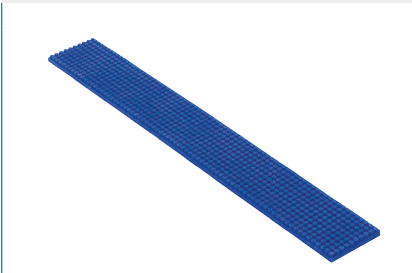
- Available in different versions
- GU1: Basic jaw with infeed knobs
- Receiver holes for infeed knobs - 4.5 mm



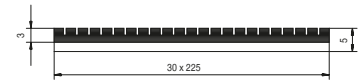
### ► Technical Data

| Order no.                                     | GU1      | GU1SI    |
|---|----------|----------|
| Resistance DIN53504 min. [N/mm <sup>2</sup> ] | 10       | 10       |
| Material                                      | NBR      | Silicone |
| Color   | Black    | Blue     |
| Operating temperature max. [°C]               | 120      | 200      |
| Shore hardness                                | 65 +/- 3 | 60 +/- 5 |

## ► SERIES GU - RUBBER JAW LINERS



- Available in different versions
- Rubber jaw with baseplate made of aluminum



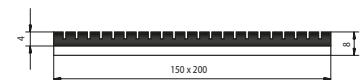
### ► Technical Data

| Order no.                                     | GU2      | GU2SI    |
|---|----------|----------|
| Resistance DIN53504 min. [N/mm <sup>2</sup> ] | 10       | 10       |
| Material                                      | NBR      | Silicone |
| Color   | Black    | Blue     |
| Operating temperature max. [°C]               | 120      | 200      |
| Shore hardness                                | 65 +/- 3 | 60 +/- 5 |

## ► SERIES GU - RUBBER JAW LINERS



- Available in different versions
- Rubber jaw with baseplate made of aluminum



### ► Technical Data

| Order no.                                     | GU2G     | GU2GSI   |
|---|----------|----------|
| Resistance DIN53504 min. [N/mm <sup>2</sup> ] | 10       | 10       |
| Material                                      | NBR      | Silicone |
| Color   | Black    | Blue     |
| Operating temperature max. [°C]               | 120      | 200      |
| Shore hardness                                | 65 +/- 3 | 60 +/- 5 |

# VALVES, FITTINGS, ACCESSORIES

## JAW ACCESSORIES

### ► SERIES KF - RUBBER COATED TAPE



- Smooth surface or knobbed surface Adjusts itself optimally to the shape of the gripper jaw ideal coefficients of friction and compensates for variations in tolerances
- Resistant against adhesive materials

#### ► Technical Data

| Order no.                             | KF50G  | KF50N  |
|---------------------------------------|--|--|
| Size [mm]                             | 500 x 100                                      | 500 x 100                                      |
| Material                              | Impregnated cotton fabric with special coating | Impregnated cotton fabric with special coating |
| Surface                               | smooth   | knobbed  |
| Material thickness [mm]               | 0,48   | 0,48   |
| Max. permitted temperature range [°C] | +60 (briefly up to +100 °C)                    | +60 (briefly up to +100 °C)                    |
| Tensile strength                      | 0.9  | 0.9  |
| Adhesive strength                     | 22   | 22   |

### ► SERIES BGM - EPOXY JAW COMPOUND

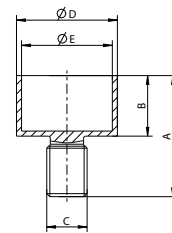


- For your individual gripper jaws in a few steps
- Hard as metal and can be used for the most sensitive parts due to silicone filling
- Sufficient for approximately 10 medium-sized jaw cups

### ► SERIES BN - JAW CUPS FOR EPOXY JAW COMPOUND



- Jaw Cups for Epoxy Jaw Compound (BGM)



#### ► Technical Data

| Order no. | BN8 | BN12 | BN16 | BN20 |
|-----------|-----|------|------|------|
| A [mm]    | 8   | 12   | 16   | 20   |
| B [mm]    | 4   | 6    | 8    | 10   |
| C1        | M3  | M4   | M5   | M6   |
| Ø- D [mm] | 6   | 10   | 16   | 20   |
| Ø- E [mm] | 5   | 9    | 15   | 19   |



## ► SERIES GU800 - RUBBER MOULDING COMPOUND



- For complicated gripper fingers with boreholes, seals and roller coatings
- Repairs to conveyor belts, solid rubber tires, transport casters, pipes, vibration protection on machines and insulation protection

### ► Technical Data

| Order no.                                      | GU800       |
|--|-------------|
| Mix ratio                                      | 100:50      |
| Shore hardness level after hardening (ISO 868) | 80          |
| Sealed   | 1.04        |
| Tensile strength (ISO 37) [N/mm <sup>2</sup> ] | 8,5         |
| Elongation at break (ISO 37)                   | 900         |
| Tear resistance (DIN 53356)                    | 17          |
| Permitted temperature range [°C]               | -60 ... +90 |